

# UltraTech READIPLAST

RP

Series: RP0012 | Month: February 2021  
Supersedes all earlier TDS

General Purpose Plastering Mortar

UltraTech READIPLAST RP is a cement-based, plastering mortar for application over masonry walls, RCC columns, beams and ceiling areas. It provides strong surface suitable for all types of final finishing applications.

## Specification

Technical parameters complies with IS 1661-1972, IS 2250-1965, IS 2402-1963.

## Areas of Application

UltraTech READIPLAST RP is ideal for plastering on inner and outer walls. It can also be used effectively on brick, block, stone walls as well as concrete surfaces. Highly recommended for well-prepared walls requiring thickness of plaster up to 15mm in single layer.

## Features and Benefits

- Excellent replacement to conventional plaster
- Assured consistent quality
- Needs lesser curing than conventional plaster
- Reduced water absorption hence enhanced durability
- Provides uniform and smooth finish to walls
- Lesser rebound loss than conventional plaster
- Quality plastering since it contains no impurity
- Speedy work due to convenience in application
- Minimal wastage

## Method of Application



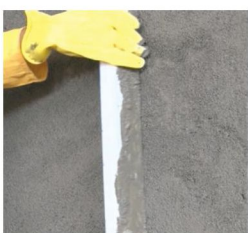
### Surface Preparation

- Prepare the surface before the application of UltraTech READIPLAST RP by removing oil, bond inhibiting agents, dirt, dust and laitance.
- Clean the surface following suitable methods like by using wire brush, water jetting, mopping, etc.
- Pre-wet the surface before the application of UltraTech READIPLAST RP.
- It is advisable to roughen the concrete surface or apply UltraTech SEAL & DRY 5 PLUS as bonding agent over the concrete surface to have the required adhesion.



### Mixing

- UltraTech READIPLAST RP requires 16-19% potable water by weight of material.
- Add UltraTech READIPLAST RP to the measured quantity of water and mix for 2-3 minutes to ensure a consistency free of lumps.
- Mix only the required quantity of material which can be consumed within the 1 hour pot life and do not add more water than the prescribed water ratio to the already mixed UltraTech READIPLAST RP.



### Application

- UltraTech READIPLAST RP can be applied using mortar trowels or spatula like in conventional system requiring no additional mason training.
- UltraTech READIPLAST RP can be applied for thickness up to 15 mm in single layer. For thickness above 15 mm, multiple layer application is recommended.

## Technical data as per relevant IS Standards

Bulk density	1500-1600 kg/m <sup>3</sup>
Water powder ratio	16-19% by weight
Pot life	1 hour @ 27°C
Compressive strength @ 28 days	10-12 MPa
Coverage/40 kg bag (Depending on the substrate)	18-22 sq.ft. @ 12mm
Thickness of layer	8-15 mm per coat
Curing	2-3 days @ 2-3 times a day
Wastage	Negligible

### Note

- Allow a minimum of 48 hours for the subsequent usage over UltraTech READIPLAST RP applied areas. Do not apply if temperature is likely to drop below 5°C or exceed 50°C. For harsh climate, curing has to be done for 4-5 days with consultation of Technical services cell.
- The technical data provided in this technical data sheet is as per lab testing conditions and may vary as per the actual method of application at sites.
- Consult UltraTech Building Products Division Technical Services Cell for any further technical assistance.

### Shelf Life

- UltraTech READIPLAST RP has a shelf life of 12 months from the date of manufacture. Store in a cool and dry place.

### Packaging

40 kg

### Safety Directions

- UltraTech READIPLAST RP is non-toxic. Use of gloves and goggles recommended. Any splashes to the skin or eyes should be washed off with clean water immediately.
- In case of prolonged irritation, medical advice should be sought. UltraTech READIPLAST RP is non-flammable.

### Other Product Categories

- Waterproofing - SEAL & DRY and WEATHER PRO
- Tile Adhesive & Tile Grout - TILEFIXO and TILEFIXO GROUT
- Plaster & Jointing Mortar - SUPER STUCCO, BASEKRETE and FIXOBLOCK
- Repair & Rehabilitation - MICROKRETE, MYKROFILL and BASEKRETE
- Flooring - FLOORKRETE
- Industrial & Precision Grout - POWERGROUT
- Autoclaved Aerated Lightweight Concrete Blocks - XTRALITE

#### DISCLAIMER

Information provided in this data sheet is a guideline for usage. Users are advised to undertake a trial for product suitability prior to its full scale usage. There is no implied guarantee/warranty for the results and the company is not liable for any consequential damages.



#### UltraTech Cement Limited

Regd. Office: 2<sup>nd</sup> Floor, B-Wing, Ahura Centre, Mahakali Caves Road, MIDC, Andheri (East), Mumbai - 400 093. India | Email: [ultratech.care@adityabirla.com](mailto:ultratech.care@adityabirla.com)  
Website: [www.ultratechcement.com](http://www.ultratechcement.com) | Toll Free: 1800 210 3311

